

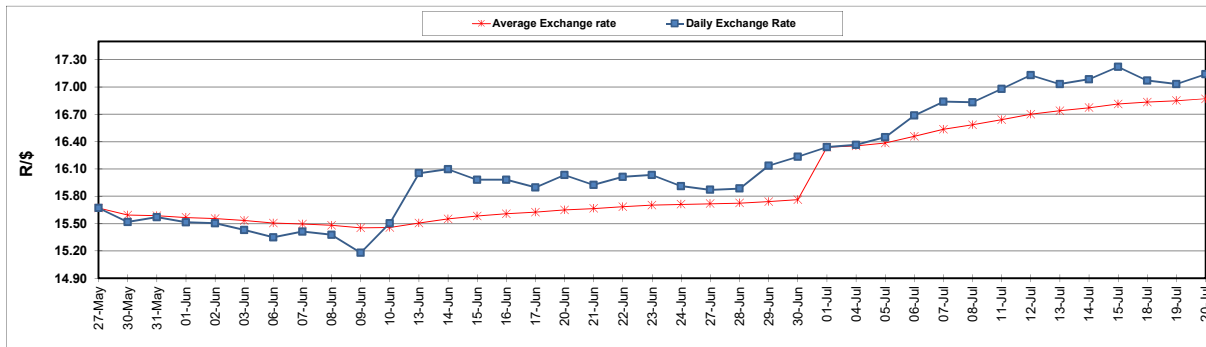
	PETROL 95 ULP	PETROL 93 ULP & LRP	DIESEL 0.05%	DIESEL 0.005%	ILL. PAR.
GAUTENG PUMP PRICE (SA c/l) AS FROM 06/07/2022	2,674.000	2,631.000	-	-	-
WHOLESALE PRICE (SA c/l) AS FROM 06/07/2022	-	-	2,540.440	2,552.840	1,986.288
SINGLE NATIONAL MAXIMUM RETAIL PRICE	-	-	-	-	2,623.000
BASIC FUEL PRICE - 20/07/2022 (SA c/l)	1,401.856	1,376.891	1,537.338	1,545.412	1,584.241
PRESS RELEASE CONTRIBUTION TO BFP 06/07/2022 - 20/07/2022 (SA c/l)	1,689.410	1,646.410	1,763.630	1,776.030	1,768.128
UNIT OVER/(UNDER) RECOVERY - 01/07/2022 (SA c/l)	287.554	269.519	226.292	230.618	183.887
AVERAGE BASIC FUEL PRICE 01/07/2022 - 20/07/2022	1,498.556	1,457.410	1,610.493	1,620.434	1,619.191
AVERAGE UNIT OVER/(UNDER) RECOVERY 01/07/2022 - 20/07/2022	151.854	154.285	119.709	122.381	113.366

ANALYSIS MOVEMENT OF AVERAGE OVER/(UNDER) RECOVERY

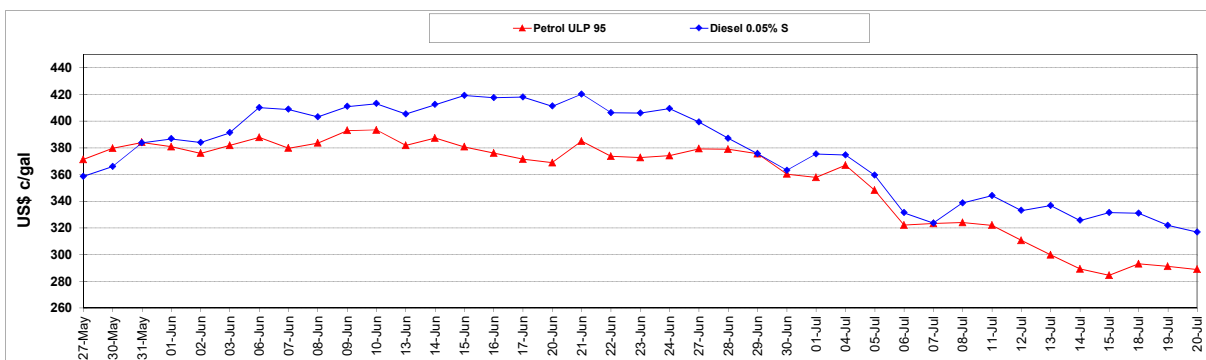
	PETROL 95	PETROL 93	DIESEL 0.05%	DIESEL 0.005%	ILL. PAR.
- MOVEMENT IN INTERNATIONAL PRODUCT PRICES	250.233	249.964	225.436	228.763	219.665
- MOVEMENT IN EXCHANGE RATE	(98.379)	(95.678)	(105.728)	(106.381)	(106.299)
AVERAGE UNIT OVER/(UNDER) RECOVERY 01/07/2022 - 20/07/2022	151.854	154.285	119.709	122.381	113.366

R/\$ EXCHANGE RATE - (R/\$17.1380 - 20/07/2022)

EXCHANGE RATE USED IN BASIC FUEL PRICE



INTERNATIONAL PRODUCT PRICES OF BASKET USED IN BASIC FUEL PRICE



BASIC FUEL PRICE IN SA CENTS PER LITRE

